



PREMIUM PRODUCTS

SPARE PARTS LIST

Model # Atd-5800

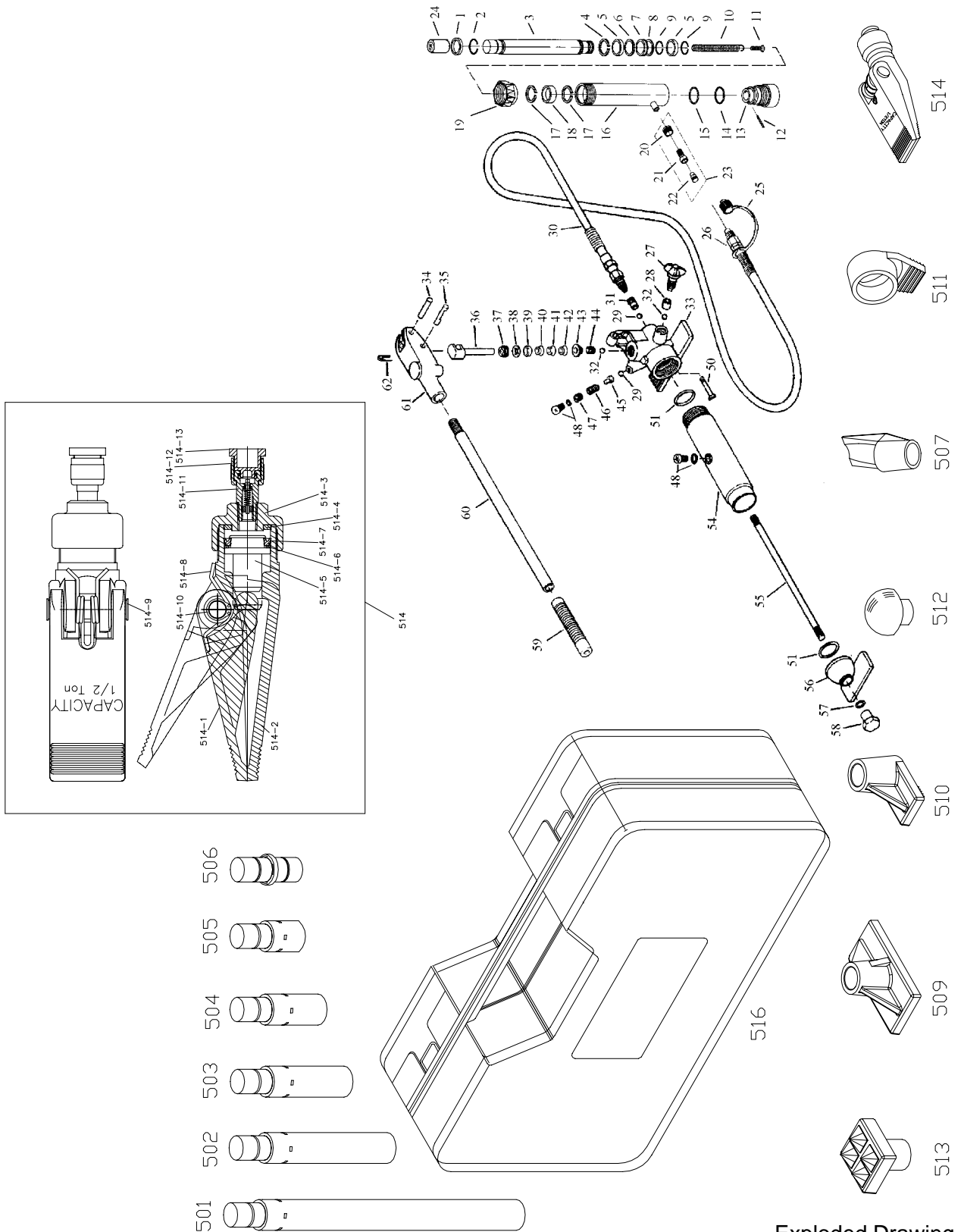
ITEM	PARTCODE	DESCRIPTION	QTY	ITEM	PARTCODE	DESCRIPTION	QTY
1	427-6-4301-304	spring	1	46	516-2-0080-010	safety spring	1
2	431-6-2202-106	collor	1	47	426-6-1201-106	safety valve screw	1
3	*	piston rod	1	48	324-6-1900-208	filler screw assy.	2
4	*	snap ring	1	50	532-8-0050-024	filter	1
5	*	ram bearing	2	51	*	o-ring	2
6	*	backup ring	1	54	431-6-1401-400	reservoir	1
7	*	u-cup	1	55	431-6-1106-206	bolt rod	1
8	*	washer	1	56	430-6-1501-104	bracket	1
9	*	internal snap ring	2	57	511-7-0180-303	o-ring	1
10	521-2-0150-036	return spring	1	58	426-6-1502-100	nut	1
11	649-1-0050-019	screw	1	59	506-9-0214-028	handle grip	1
12	601-4-0030-059	pin	1	60	431-6-1702-404	handle	1
13	*	cylinder base	1	61	434-6-1701-302	handle sleeve	2
14	*	backup ring	1	62	*	retaining pin	1
15	*	o-ring	1				
16	*	cylinder	1	501	434-3-4615-104	extension tube (5)	1
17	431-6-2308-102	retaining ring	2	502	434-3-4614-102	extension tube (4)	1
18	*	cylinder collar	1	503	434-3-4613-100	extension tube (3)	1
19	431-6-2305-207	cover	1	504	434-3-4612-108	extension tube (2)	1
20	434-6-3204-207	coupler nut	1	505	434-3-4611-106	extension tube (1)	1
21	434-3-3201-102	female coupler	1	506	431-4-4400-108	connector	1
22	434-6-3312-109	dust cover-female	1	507	431-6-4640-302	wedge head	1
23	434-4-3201-108	quick coupler-female	1	509	431-3-4800-108	flat base	1
24	431-6-4660-409	serrated saddle	1	510	434-6-4630-209	ram toe	1
25	434-6-3313-101	dust cover-male	1	511	434-6-4620-102	plunger toe	1
26	434-3-3301-106	quick coupler-male	1	512	434-6-4620-105	2 3/4" rubber head	1
27	426-3-1301-203	release valve	1	513	434-6-4650-507	90° combination head	1
28	*	oil seal	1	514	434-2-4100-105	hydraulic spreader	1
29	601-7-0006-005	steel ball	2	515	434-1-2000-105	ram assy.	1
30	434-4-3000-108	hose	1	516	434-6-7101-106	blow case	1
31	426-6-1105-201	bolt plug	1	514-1	428-6-4102-507	upper jaw	1
32	601-7-0008-009	steel ball	2	514-2	428-6-4101-202	lower jaw	1
33	*	base	1	514-3	428-6-4104-309	top nut	1
34	*	pin	1	514-4	512-3-0216-017	washer	1
35	*	pin piston	1	514-5	428-6-4103-509	piston	1
36	430-6-1601-209	pump piston	1	514-6	*	backup ring	1
37	428-6-1104-203	screw adjustment	1	514-7	*	u-cup	1
38	513-3-0270-010	washer	1	514-8	534-2-0190-028	return spring	1
39	428-6-1103-100	upper seal base	1	514-9	428-6-4105-109	pin	1
40	*	V-oil seal	1	514-10	667-5-0120-00	retaining ring "C"	1
41	*	V-oil seal	2	514-11	434-3-3201-102	quick coupler-female	1
42	*	V-oil seal	1	514-12	434-6-3204-207	coupler nut	1
43	428-6-1102-209	lower seal base	1	514-13	434-6-3312-109	dust cover	1
44	522-8-0127-016	cup filter	1				
45	501-9-0085-202	spring cap	1				

* part is not available



4 Ton Hydraulic Repair Kits

Model # Atd-5800



Exploded Drawing
1st Edition © Feb. 2001